



CONTEST INFO

Organised by COLOR GUARD NEDERLAND

EUROPEAN COLOR
GUARD REGIONAL
DRACHTEN
27 FEBRUARI 2010

VERSION 2

CONTENTS

General	1	Staff seats	4
Changes in Version 2	1	Video- and Photo-Permit and -Spots	4
Address/Entrance/Tickets	1	After	4
Activities in/around the Hall	1	Judges CDs	4
Booster Information	1	Folding Floors / Remove Props	4
Emergencies	1	Olympic Retreat / Awards	4
First Aid/Authorities	1	Critique	4
Functions	1	Other	5
Map	2	Prelims Rounds	5
Before your Show	3	Member Stands	5
Props/Materials (Load/Unload)	3	Various	5
Passes and wristbands	3	Questions	5
Dressing Rooms	3	Shoes	5
Soundcheck/Turning in Music	3	Actual Info	5
Announcements/Spielsheets	3	Time Table	5
Warming-up	3	General Times	5
During	4	Unit Schedule	6
Judges	4		

GENERAL

CHANGES IN VERSION 2

The A-Class Prelims are now divided into two rounds. For Dynamix and U-niQue this means that their timeslots for Warming-Up and Showtime have been moved up by 14 minutes.
The principle of Rounds is explained in the chapter Other on Page 5.

ADDRESS/ENTRANCE/TICKETS

Date: 27 February 2010
Location: Sportcentrum Drachten
 Splitting 65
 9202 LD Drachten
Admission: € 15,00
Ticket Presales: <http://tickets.colorguard.org>

ACTIVITIES IN/AROUND THE HALL

Color Guard Nederland is the tenant of the complex and as such responsible for safety, appointments and permits. Do not contact the hall-management with wishes or questions, but do so via CGN. Selfmade appointments are invalid, the hall management knows and agrees with this.

BOOSTER INFORMATION

In the hall near the Entrance.
 Admitted Boosters are:
 Guard Equipment
 Tims Toms
 Avant Courir

Setup of Boosterstands can start as of 10:30 hrs.

EMERGENCIES

Emergencies: Tel. +31-871-900130
 or +31-6-51067218 (P.J. de Werk)

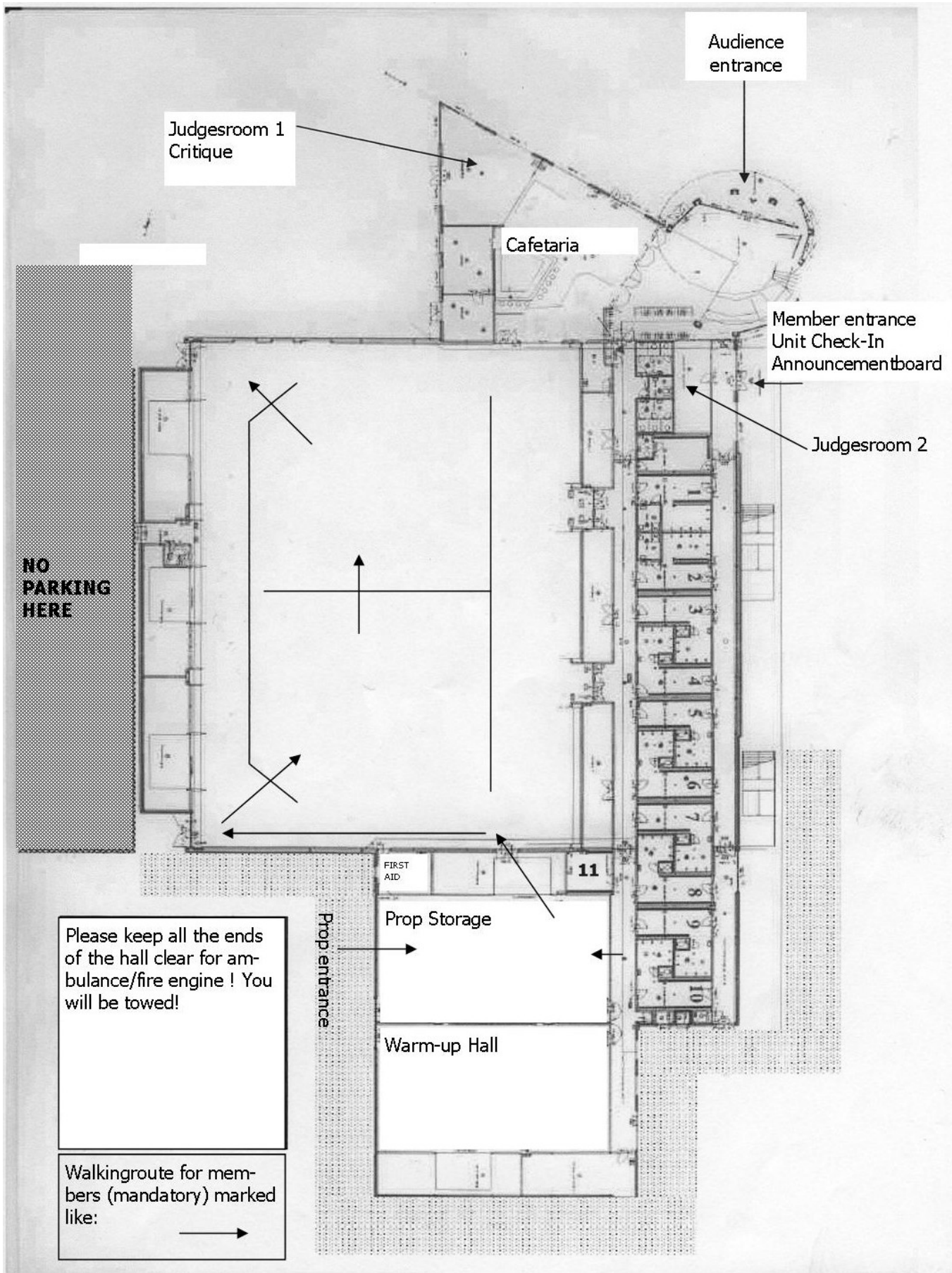
FIRST AID/AUTHORITIES

Number of Aiders: 2 and 1 Physiotherapeutic
Present at: 11.30 hrs (at the latest)
First Aid Room: See map
Alarm number: 112
Fire Brigade: 112
Police: 0900-8844
Hospital: Nij Smellinge
 Compagnonsplein 1
 9202 NN Drachten
 +31-512-588888

FUNCTIONS

Contest Director: Peter Jan de Werk
Press contacts: Peter Jan de Werk
Unit Check-In: Femke Goedhart
Volunteers: led by Huub Rustman
Dressing Room Check: Huub Rustman
Tabulation: Ingrid Hulsbosch
Chief Judge: Sue Nicholson

MAP



BEFORE YOUR SHOW

PROPS/MATERIALS (LOAD/UNLOAD)

All props/materials must fit a normal (single) door and you can bring them in through the Prop Entrance (see Map). You are required to follow directions of CGN Volunteers. Mind your shoes.

Bring in your props no more than 1 hour before your showtime (see timetable).

Note: For your stages and props, keep in mind that the opening in the black curtain is 4 meters wide and 2.80 meters high.

PASSES AND WRISTBANDS

You receive your Member passes and Staff-bands at the CGN unit check-in (at the member-entrance). At this check-in the members receive a stamp when they turn in their member pass.

FIRST CONTEST OF THE SEASON?

At your first contest you also receive the passes that are valid throughout the season, as far as you requested them. You also receive instructions on how to properly attach the wristbands.

HOW TO WEAR PASSES AND BANDS

The season-passes are perforated, but clips or cords are not provided. Please bring your own or buy them at the CGN-stand (see map). An All-Access must be worn visibly at all times. Video- and Photo permits must be shown at the Photo and Video spots.

Make sure your staff wears their wristbands properly. If you are unsure how to attach them, ask a CGN Volunteer. They'll be glad to help you out.

Confiscated bands will not be replaced and during upcoming events you will not receive new ones either. CGN tries to prevent fraud as much as possible so participating units aren't confronted with drastic raises in fees over the upcoming years.

DRESSING ROOMS

There's a strict non-smoking policy for the whole building, including the dressing rooms. Dressing rooms should be left tidy. Space is limited so please work with the groups that you share dressing room space with. Please take note of the dressing room check, to be done by Huub Rustman. If you don't ask for the check and we need clean-up after you, you will be charged **50 euros** for this.

- K1: Volonté / Dynamix / Beatrix
- K2: Imagin' / Xpression / U-niQue
- K3: Impact A / Inspiration / Hollandia
- K4: Jong Impact / Serenity / Advendo
- K5: Euphonia / Sensation
- K6: D-Zire / Intension
- K7: CMH Menaldum / 2Xtreme
- K8: Starriders / Encorps / Avant Courir
- K9: Concordia / The Pride A and Cadets
- K10: Future Blaze / The Pride Open and Junior
- K11: Enjoy

SOUNDCHECK/TURNING IN MUSIC

GENERAL

Every arena is different, including the sound experience. Please prepare your members for this, to avoid disappointment.

Groups that have both Prelims and Finals, only have one Soundcheck, before Prelims. Only when there were major problems during the Prelims performance, is it possible to request a new soundcheck. The Contest Director has the final say in this.

CDs

Make sure all CD's are labeled with your unit's name and Class on both the box and the disc!

CDs must contain ONLY 1 track— and may not have any other music than the show track.

It is recommended that you keep a back-up copy of your CD present in the hall. If there is problem playing your CD and there is no backup CD available, you will not be able to perform in the contest.

After your performance, your CD will be put in the same containers as your judges CD (behind the black curtain). CDs that are not collected will be discarded (not be kept by CGN), it's your own responsibility to collect them.

WE CANNOT PLAY MP3-FILES!

SOUNDCHECKS

Sound checks can be done according the timetable. Please try to keep to the specified times. Want to go earlier? Just line-up and we might be able to squeeze you in. If you come late, your chance is over and you won't be able to sound check unless a gap opens up.

Please discuss what you will check with the sound engineer when you hand in your CD. The volume will be measured and always kept within the legal norm (max 85 dB). Therefore, make sure that you listen to the loudest parts of your soundtrack during your sound check.

ANNOUNCEMENTS/SPIELSHEETS

Make sure you turn-in a spielsheet/text for the announcer at the sound table. Always include your unit name and class at the top of the paper and make sure that all text is readable.

If you turned-in a text at a previous contest and there are no changes, you don't have to turn it in again.

WARMING-UP

GENERAL

Starting times for Warm-up are in the timetable. Please follow these strictly. Be considerate to other groups.

Use of music is not allowed. No audience at the warm-up. We want everyone to be able to focus. Report violations to CGN volunteers.

Location: See Map

It is not allowed to use music.

DURING

JUDGES

COLOR GUARD

Caption	Judge
General Effect 1	Sue Nicholson
General Effect 2	Mike Pavlock
Ensemble Analysis	William Chumley
Movement	Mark Wells
Equipment	Brian Yothers
Timing & Penalty	Stephan van Nes

This setup can be changed without prior notice.

STAFF SEATS

Your Staff members and support staff are allowed to sit in the designated staffseats (below in the stands) only during their units performance. A **maximum of 5** staff members is allowed in the staff seating upstairs. All staff members should remain in the allocated areas and should refrain from causing any disturbance to other

nearby located audience or to the judges. Any form of communication with judges during the contest is strictly prohibited.

The performance will not be allowed to begin until the staff members have taken the correct seats. The interval time will keep running however, so make sure everyone knows where to sit.

VIDEO- AND PHOTO-PERMIT AND -SPOTS

During this contest CGN rules and regulations for photography and video are applicable.

Units may only tape their own performance from the directed area with a valid permit. This permit is not an access pass but only a permit.

Units may take pictures of their own unit from the marked space on the floor only if they have a valid photo permit. This is a permit and not an access pass. It is not permitted to sell pictures taken during this event. Units may sell prints of their own performance only.

Sale of commercial pictures is only permitted by WGI, CGN, or a designated third party.

AFTER

JUDGES CDs

All recordings will be burned on one CD immediately following your performance. The CD will be available in the bins behind the curtain. CD's left behind will be discarded.

Make sure that you have equipment to play the CD (discman, laptop, etc.).

All captions are on 1 CD so if you want to split them, you will need your own equipment to do so.

FOLDING FLOORS / REMOVE PROPS

Folding floors is only allowed in the Prop storage hall. Please report to Huub Rustman if you need more room. Keep in mind that folding floors is not always possible! Make sure your materials are out of the Storage Hall at the latest 30 minutes after your performance.

OLYMPIC RETREAT / AWARDS

You can find the schedule for the retreats in the Timetable (see page 5). In the timetable you can also find where to report: at the Entry or the Exit behind the black curtain. Please follow directions from the CGN volunteers from there.

Note: Independent A units that do not make Finals, are expected at the evening retreat. That is why you can find the times and reporting-locations at the Prelims schedule.

Should you not stay for Retreat, report this to the Unit Check-in and/or Femke Goedhart.

CRITIQUE

At the Regional, there are no Critiques.

OTHER

PRELIMS ROUNDS

The Independent A Prelims are split-up in two rounds. The winner of each round automatically advances to Finals. From the other units, the eight highest scores of both rounds also advance. That way, a total of ten units will make Finals.

Details can be found in the WGI Manual, page 84 (available through the CGN Intranet).

MEMBER STANDS

The Member seating area is for marching members only; not for staff, floor-teams, or parents (units should take care of their younger members themselves). The members can use the benches and the space directly around them. Make sure that all members have a good view of the competition arena. Do not sit outside the designated area, as this can disturb performers and impede safety precautions.

VARIOUS

- Participating units are required to be aware of the rules, regulations and philosophy of CGN as described in the CGN Manual and to act in accordance.
- CGN depends on the units governing boards to communicate the contents of this contest info to all their staff and support members.
- Directions given by a CGN volunteer should always be followed.
- CGN does not accept any liability for lost goods, theft and damages to goods during the event.
- Audience members and other people that are not directly involved with the contest are not allowed to enter the contest floor. Staff members and participants are allowed only in the areas relevant to their access passes as described in the CGN Manual.

- Units should keep in mind that space behind the black curtain can be limited.
- Placarding and or distributing of commercial publication is not allowed without prior authorization by the CGN board (see manual).
- The contents of this contest info cannot be used to enforce any rights.

QUESTIONS

Participating units with special wishes or requests should report them beforehand (but no later than the week running up to the contest) to CGN. During the contest, special requests can only be made to the Contest Director.

Color Guard Nederland
J.H. van den Broekstraat 21
3071 MB Rotterdam
The Netherlands

Phone: +31 871 - 900 130
Fax: +31 842 - 110 771
info@colorguard.org
www.colorguard.org
Skype: colorguardnl

SHOES

In the hall only indoor shoes can be worn. Shoes with soles that leave marks are prohibited.

ACTUAL INFO

In the week prior to the event, CGN will publish the latest updates on the intranet. During the contest there is a Message Board near the Unit Check-In.

TIME TABLE

GENERAL TIMES

Volunteers present:	8:30	hrs
Unit check-in Member Entrance:	10:30	hrs
Prop Entrance:	10:30	hrs
Judges present:	11:00	hrs
Audience Entrance:	11:30	hrs
Start:	12:00	hrs

These times are strictly kept. CGN needs every available minute of setup time.

	Report	Start
Retreat 1 :	17:40	16:45
Retreat 2 :	21:00	21:05
Critique :	None	

UNIT SCHEDULE

Unit	Soundcheck	Warm-up	Starting Line	SHOWTIME	Retreat	Report	Start
A CLASS PRELIMS - ROUND 1							
Volonté	11:18	11:31 - 11:47	11:55	12:00	Entry	21:20	21:25
Imagin'	11:20	11:39 - 11:55	12:03	12:08	Entry	21:20	21:25
Jong Impact	11:22	11:47 - 12:03	12:11	12:16	Entry	21:20	21:25
Impact A	11:24	11:55 - 12:11	12:19	12:24	Entry	21:20	21:25
Future Blaze	11:26	12:03 - 12:19	12:27	12:32	Entry	21:20	21:25
D-Zire	11:28	12:11 - 12:27	12:35	12:40	Entry	21:20	21:25
Starriders	11:30	12:19 - 12:35	12:43	12:48	Entry	21:20	21:25
Concordia	11:32	12:27 - 12:43	12:51	12:56	Entry	21:20	21:25
Euphonia	11:34	12:35 - 12:51	12:59	13:04	Entry	21:20	21:25
CMH Menaldum	11:36	12:43 - 12:59	13:07	13:12	Entry	21:20	21:25
A CLASS PRELIMS - ROUND 2							
Dynamix	11:38	13:05 - 13:21	13:29	13:34	Entry	21:20	21:25
U-niQue	11:40	13:13 - 13:29	13:37	13:42	Entry	21:20	21:25
Hollandia	11:42	13:21 - 13:37	13:45	13:50	Exit	21:20	21:25
Serenity	11:44	13:29 - 13:45	13:53	13:58	Exit	21:20	21:25
Intension	11:46	13:37 - 13:53	14:01	14:06	Exit	21:20	21:25
Inspiration	11:48	13:45 - 14:01	14:09	14:14	Exit	21:20	21:25
The Pride A	11:50	13:53 - 14:09	14:17	14:22	Exit	21:20	21:25
² Xtreme	11:52	14:01 - 14:17	14:25	14:30	Exit	21:20	21:25
Xpression	11:54	14:09 - 14:25	14:33	14:38	Exit	21:20	21:25
OPEN CLASS PRELIMS							
Encorps	13:36	14:23 - 14:41	14:50	14:55	Exit	21:20	21:25
Beatrix Winterguard	13:38	14:32 - 14:50	14:59	15:04	Exit	21:20	21:25
Sensation	13:40	14:41 - 14:59	15:08	15:13	Exit	21:20	21:25
The Pride of The Netherlands	13:42	14:50 - 15:08	15:17	15:22	Exit	21:20	21:25
CADET CLASS							
Hollandia	15:32	15:34 - 15:48	15:55	16:00	Exit	17:40	17:45
Advendo	15:34	15:41 - 15:55	16:02	16:07	Exit	17:40	17:45
U-niQue Cadets	15:36	15:48 - 16:02	16:09	16:14	Exit	17:40	17:45
The Pride Cadets	15:38	15:55 - 16:09	16:16	16:21	Exit	17:40	17:45
D-Zire	15:40	16:02 - 16:16	16:23	16:28	Exit	17:40	17:45
Euphonia	15:42	16:09 - 16:23	16:30	16:35	Exit	17:40	17:45
Avant Courir	15:44	16:16 - 16:30	16:37	16:42	Exit	17:40	17:45
Enjoy	15:46	16:23 - 16:37	16:44	16:49	Exit	17:40	17:45
JUNIOR CLASS							
Advendo	15:48	16:30 - 16:44	16:51	16:56	Entry	17:40	17:45
CMH Menaldum	15:50	16:37 - 16:51	16:58	17:03	Entry	17:40	17:45
Intension	15:52	16:44 - 16:58	17:05	17:10	Entry	17:40	17:45
The Pride Junior	15:54	16:51 - 17:05	17:12	17:17	Entry	17:40	17:45
Avant Courir	15:56	16:58 - 17:12	17:19	17:24	Entry	17:40	17:45
² Xtreme	15:58	17:05 - 17:19	17:26	17:31	Entry	17:40	17:45

Unit	Soundcheck	Warm-up	Starting Line	SHOWTIME	Retreat
A-CLASS FINALS					
8th Highest Score After Round Winners		18:46 - 19:02	19:10	19:15	Zie boven / See above
7th Highest Score After Round Winners		18:54 - 19:10	19:18	19:23	
6th Highest Score After Round Winners		19:02 - 19:18	19:26	19:31	
5th Highest Score After Round Winners		19:10 - 19:26	19:34	19:39	
4th Highest Score After Round Winners		19:18 - 19:34	19:42	19:47	
3rd Highest Score After Round Winners		19:26 - 19:42	19:50	19:55	
2nd Highest Score After Round Winners		19:34 - 19:50	19:58	20:03	
1st Highest Score After Round Winners		19:42 - 19:58	20:06	20:11	
1st Place Round Winner 2nd Highest Score		19:50 - 20:06	20:14	20:19	
1st Place Round Winner Highest Score		19:58 - 20:14	20:22	20:27	
OPEN CLASS FINALS					
4th from Prelims		20:08 - 20:26	20:35	20:40	Zie boven / See above
3rd from Prelims		20:17 - 20:35	20:44	20:49	
2nd from Prelims		20:26 - 20:44	20:53	20:58	
1st from Prelims		20:35 - 20:53	21:02	21:07	